



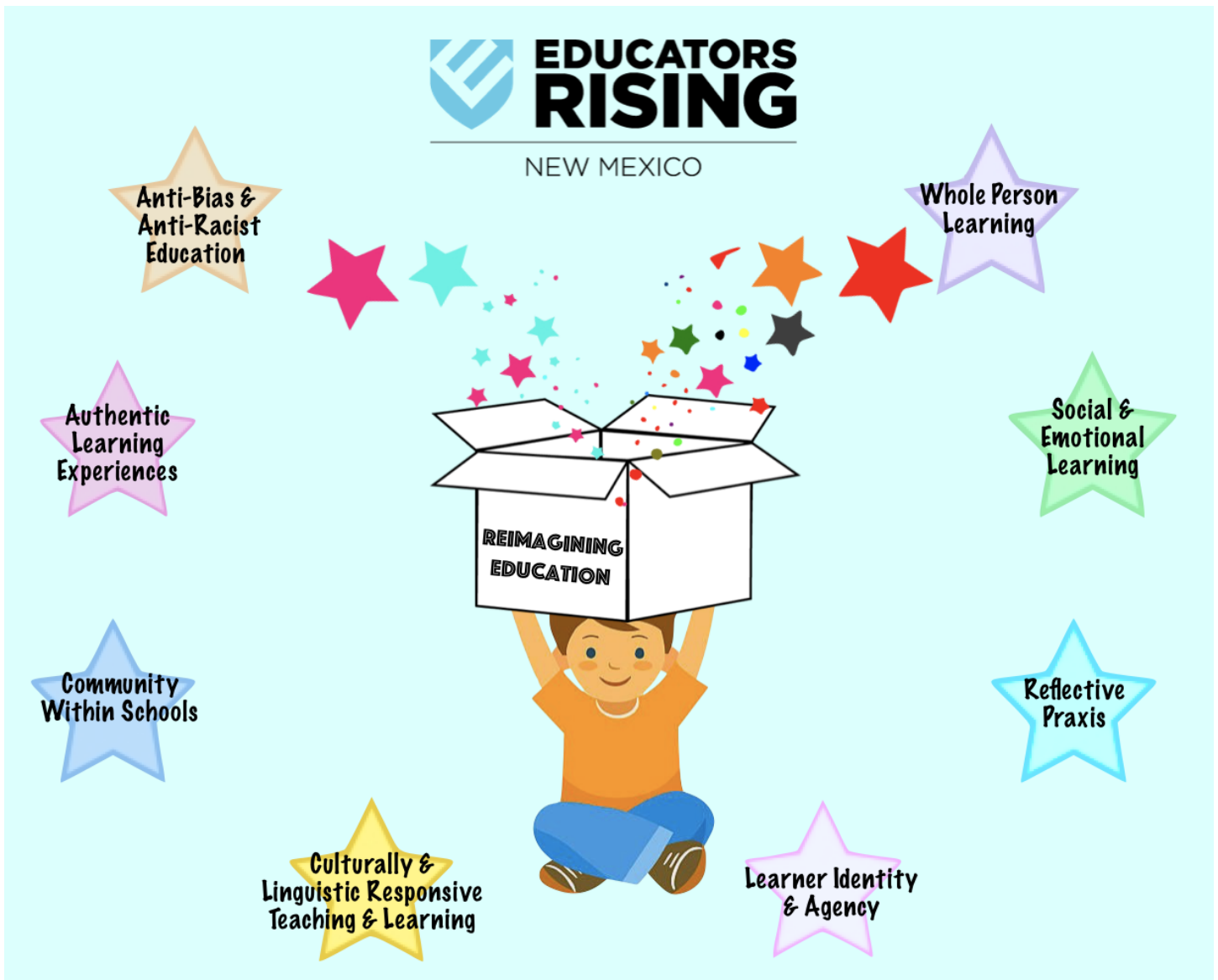
NEW MEXICO

## Service-Learning Project

2021-2022

### “Reimagining Education: A Call to Action”

Through the service-learning project, Educators Rising chapters develop, plan, carry out, and evaluate service projects to *improve the quality of life in their local communities using a central, statewide “theme”*.



### Eligibility:

1. Chapters & students must be registered and in good standing with the national and state Educators Rising organizations.
2. Up to two (2) project exhibit entries may be submitted per school for judging.
3. This is a team/chapter competition. In order to submit a service-learning project, at least  $\frac{1}{3}$  of the chapter must be involved in the project.
4. Inclusion of the theme for this year, **“Reimagining Education: A Call to Action”** in the service project.

### Submission Procedures:

1. An Educators Rising Chapter Service Project entry must be submitted fully assembled and display-ready when the school registers for the State Conference.
2. Entries must include two items:
  - a. a science fair type **display board** of support data and documentation of the service-learning project; (if the state conference is held online, schools will need to create a digital display board e.g., Glogster, Canva, Prezi, PowerPoint).
  - b. a **typed, “Service Learning Action Plan”** (below) securely attached to the back of the display board.
3. The back lower right-hand corner of the board must display the school name, and name of the chapter advisor. Failure to comply with this procedure will result in judging disqualification.
4. The display board must be free-standing. It may not require electricity. It may have a self-contained battery pack securely mounted that does not require maintenance after check-in or during the voting process. The use of QR codes to highlight video evidence is encouraged, using other devices to show videos is not.

### PROJECT EXHIBIT CONSTRUCTION GUIDELINES:

The Project Exhibit entry must be displayed on a tri-fold, science fair display board no larger than 36-inches high and 48-inches wide.

#### The display board must display the following:

- Name/Title of the project completed
- Action Plan overview -- who/what/where/when/how
- Scope of work including community concern/problem (why), project goal & impact (chapter & community)
- Artifacts from the project such as pictures or samples of work that highlight the work done & impact made

### Judging Criteria:

1. 1-2 student representatives will be required to be present during the assigned judging time to answer questions & discuss the project. Students must be present to answer questions about the service-learning project, judging will be focused on the presentation board & scope of the work.
2. Judging Committee: The judging committee will select the 1st, 2nd, and 3rd place finalists for high school chapters using the rubric below.
3. The 2nd & 3rd place finalists will be recognized during the awards ceremony.
4. 1st place will be presented with an award.

# Service Learning Action Plan



**Identify Community Concern Connected to the Theme:**



**Service Learning Goal:**



**Action Plan Overview:**

- Who:
- What:
- Where:
- Why:
- When:
- How:



**Action Steps:** What are the steps you took to complete this project?



**Evaluation:** What went well? What obstacles did you run into as you complete the service project? How did you overcome the obstacles? If you had to do this service-learning project again, what would you change?



**Impact:** How did your project improve the quality of life in your local communities using the statewide “theme”? What was the impact of your project?



**OPTIONAL BONUS POINTS -- Increase Awareness Public Relations:** How did the project positively increase awareness of Educators Rising in your community? What audiences did you reach, e.g., peers, community, public elected officials, school administrators, and school board? How did you reach these audiences? (Evidence must be included in the project display in order to receive these points.)

# Chapter Service Project Display Rubric

Through the service-learning project, Educators Rising chapters develop, plan, carry out, and evaluate service projects to *improve the quality of life in their local communities using a central, statewide “theme”*.

Name of School:

Teacher Leader:

Student Representatives:

Category	0	1	2	3	Score
<b>Service Learning Action Plan</b>	Action plan not provided	Action Plan steps are inadequate	Some evidence that the Action Plan was utilized to plan the project	The Action Plan was used to plan the project. Each step is fully explained	___ / 3
<b>Reflects Yearly Theme</b>	Did not reference, explain, or connect to the theme	The theme is only briefly mentioned or is not clearly identifiable	The link to the theme is explained in detail		___ / 2
<b>Impact</b>	Impact missing	Impact on community or chapter members is explained in a limited way	The impact of the project is significant and evident, using a variety of methods, such as data, surveys, and research		___ / 2
<b>Evaluation</b>	No evidence of follow up	Very limited evidence of follow up and evaluation	Evaluation is evident but incomplete or not thoroughly explained	Evaluation is thoroughly explained and involves multiple strategies, e.g., interviews, surveys, pre-tests, post-tests, and reports	___ / 3
<b>Uniqueness</b>	Project is not unique or relevant to the theme	The project addresses the theme but is not unique and/or has been done previously	The project is unique in its approach to solve a problem or meet a need connected to the theme		___ / 2
<b>Display Appearance</b>		Contains many errors and is not aesthetically pleasing	Some good effort in word, color, and other design choices, but needs some improvement in display aesthetics	Creative, appropriate and is aesthetically pleasing	___ / 3
<b>Bonus Points (OPTIONAL)</b>	No artifacts are shown	Efforts are evident the project increases awareness of Educators Rising	Efforts, impact & awareness are evident in the project with artifacts & complete explanations		___ / 2
				<b>TOTAL POINTS:</b>	___/15

NOTES: